

## GemSeal® Black Diamond™ XL

GemSeal® Black Diamond™ XL has taken our standard Black Diamond sealer to a higher level of performance by applying the same proprietary process used to make our premium PolyTar® sealer. We polymerize the binder to improve elasticity and flexibility, adhesion to pavement surfaces, and the cohesive strength of the film. The unique polymer we use also enhances chemical resistance. The result is a high-performance pavement sealer with exceptional durability and wear resistance over standard refined tar and asphalt based sealers. Black Diamond XL contains no refined coal tar, providing an excellent alternative to both tar and asphalt based products.

### DURABLE

- Manufactured with a proprietary polymer to increase durability
- Excellent resistance to fuel and oil
- Excellent resistance to power steering marks
- Exceptional film strength and adhesion to pavement
- Maintains its deep black color, does not fade
- Longer life and greater durability than standard refined tar or asphalt emulsion sealers

### VERSATILE

- Maintains flexibility and adhesion in wide temperature range
- Reduced tracking even in high temperatures
- Ideal for high-traffic asphalt parking lots, airfields, & driveways

### CONSISTENT

- Manufactured using colloid mill process
- Color stable – eliminates bluing or graying issues

### SAFE & EASY TO USE

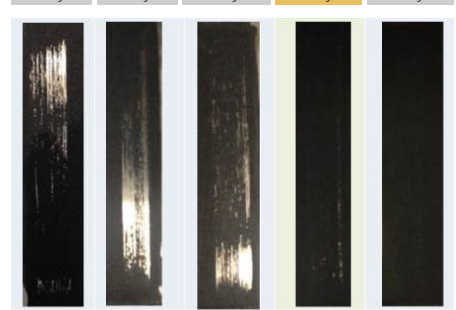
- Minimal to no skin irritation – crews will love to work with it!
- Conforms to GemSeal's industry-leading quality control program
- Applies as smoothly as refined tar sealers
- Lower odor than refined tar sealers
- Meets or exceeds ASTM D140, ASTM D529, ASTM D466, ASTM D2939; GemSeal Black Diamond does not contain refined coal tar but does meet the performance standards listed in: ASTM D5727, ASTM D3320, ASTM D3423, ASTM D490, FAA P-625, FAA P-627, and FAA P-630



### Wear Comparison Scrub Test

Modified ASTM D2486

Asphalt Sealer	Black Diamond	Fed Spec	Black Diamond XL	PolyTar
1,000 cycles	5,000 cycles	5,000 cycles	8,500 cycles	8,500 cycles



### Results:

Black Diamond XL exhibited similar wear resistance performance to PolyTar, and substantial improvement over Fed Spec, Black Diamond, and asphalt sealers.

**Increasing wear resistance** →  
 Note: Scrub cycles can vary depending on mix design and test conditions. Conditions were kept comparable in this test.

*GemSeal manufactures, supplies, and specifies pavement preservation products nationwide including sealers and additives, lot marking paints, crack sealants, pothole patches, primers, tools, and equipment. For over 60 years, we have been defined by our products, value, delivery, and customer support. We guarantee exacting quality control and consistent results on every jobsite nationwide.*